

# Real-time analytics to improve and monitor clinical performance.

## Clintegrity Clinical Analytics

### Challenge

Today, hospitals need to know where they stand to be able to quickly identify and correct performance issues in order to reduce readmissions and hospital-acquired conditions, and to manage physician practices. However, data required to create reliable, accurate, and timely reports is often old, incorrect, fragmented, and difficult to pull from multiple systems.

### Solution

Clintegrity™ Clinical Analytics is a comprehensive, customizable decision support system that enables enhanced trend and data reporting for clinical data analysis. You can drive improved care by tracking, analyzing, and benchmarking your performance data against the national database, which includes all payer inpatient data for multiple states and all Medicare inpatient discharges.

### What we do

Nuance's Clintegrity Clinical Analytics software improves decision making by providing timely, reliable information that is easy to pull together and understand. With tools that benchmark and track the quality of the services you provide, you can compare your facility with other health systems' facilities around the country in a variety of

areas, including physicians' complication rates, patient length of stay, and much more.

The system allows you to eliminate custom programming and spreadsheet madness with up-to-date performance dashboards and reports that meet the information needs of executive leadership, medical office staff, surgical services, finance, health information management, and clinical staff. You have the power to create reports that highlight the lines of service that may be at risk or those that are doing particularly well. Thus you can identify opportunities to create dedicated lines of service by tracking the trends of service utilization and performance.

### Why Clintegrity Clinical Analytics?

Nuance gives you the tools you need to monitor and turn your organization's data into clinical performance intelligence for improved decision making. Clintegrity Clinical Analytics provides:

- **Daily data access**—data uploaded today will be in the system tomorrow
- **Analytics dashboards**—including clinical measures, actual and predicted readmission rates, length of stay

---

### Key benefits

- Improves clinical and financial performance
- Enhances reporting with customizable benchmarking data
- Generates performance reports easily for multiple stakeholders
- Simplifies Leapfrog survey response
- Turnkey solution—we build your databases

---

### Key features

- Predictive readmissions
  - Actionable dashboards
  - Daily HAC, PSI, and readmissions trending
  - Ongoing Professional Practice Evaluation (OPPE) monitoring
  - Completely customizable reporting options
  - Automated system update alerts
-

- **Regulatory monitoring**—so you can add what you need before you need it
- **Leapfrog survey support**—much of the required data is easily available
- **Customizable physician profiles**—with close to 40 customizable fields, you can summarize physician statistics for readmission analysis; top diagnosis-related groups (DRGs); diagnoses and procedures; case mix and clinical outcomes; and much more
- **Time and labor savings**—when used with Clintegrity™ Quality Measures, where data flows straight from the core measures to the analytic system
- **A turnkey solution**—this web-based solution is hosted by Nuance so there's no uploading, downloading, or database creation required. Your information technology department will love you for it.

#### Comparison and Reporting

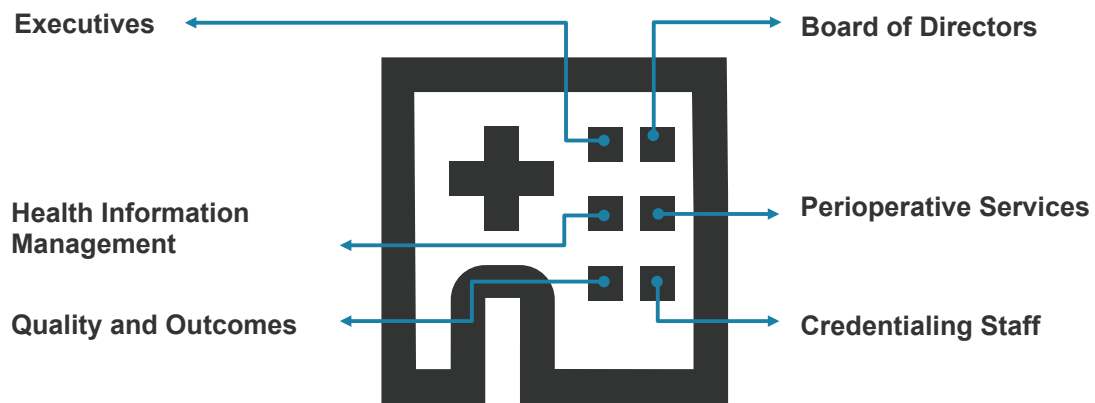
Clintegrity Clinical Analytics can extract data points for comparison and reporting from information, including:

- Inpatient, same-day surgery, emergency department, clinic, and other outpatients
- National Hospital Quality Measures
- Agency for Healthcare Research and Quality Indicators
- Physician profiles, which can help with report cards and physician re-credentialing and Ongoing Professional Practice Evaluation
- Leapfrog Hospital Survey
- Regulatory and credentialing registries
- HCAPS survey data
- Quality measures data

Today's challenges require new approaches and tools to know what's really occurring in your organization at any moment. Clintegrity Clinical Analytics enables you to truly monitor and improve your performance.

To learn more about how Nuance Healthcare can help you improve financial performance, raise the quality of care, and increase clinician satisfaction, please contact us at 877-805-5902 or visit [nuance.com/healthcare](http://nuance.com/healthcare).

#### Clintegrity Clinical Analytics Reporting improves decision making throughout the organization



#### About Nuance Communications, Inc.

Nuance Communications, Inc. is a leading provider of voice and language solutions for businesses and consumers around the world. Its technologies, applications and services make the user experience more compelling by transforming the way people interact with devices and systems. Every day, millions of users and thousands of businesses experience Nuance's proven applications. For more information, please visit: [www.nuance.com/healthcare](http://www.nuance.com/healthcare). Connect with Nuance on social media through the healthcare blog, [What's next](#), as well as [Twitter](#) and [LinkedIn](#).